

SMART PROGRAM AT A GLANCE

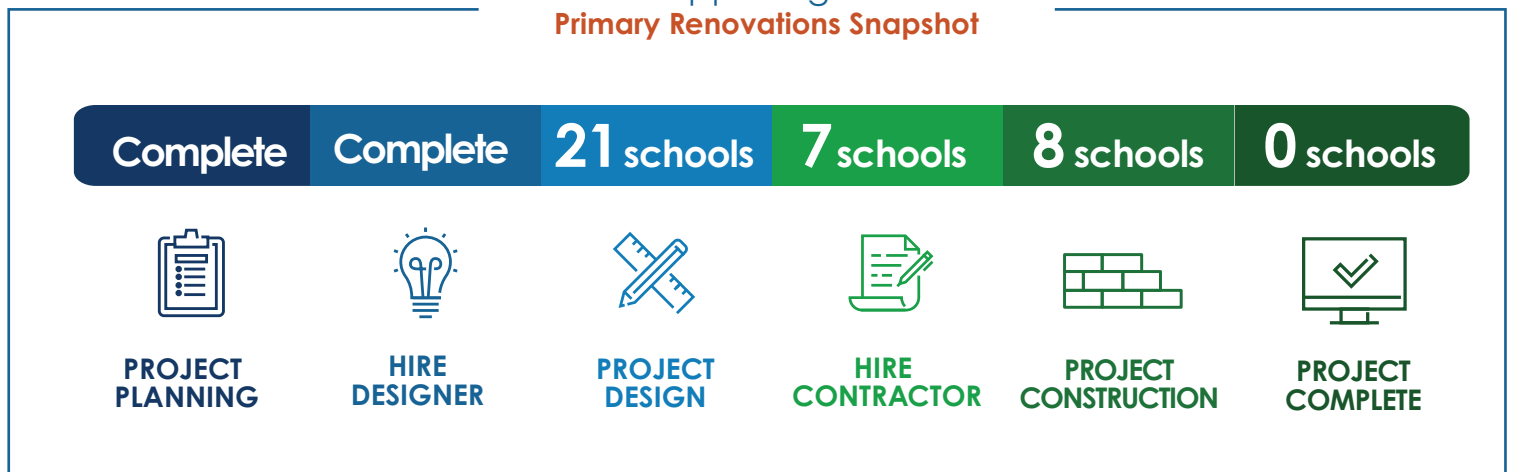
PUBLISHED JUNE 2019



DISTRICT 1



What's Happening in District 1 Primary Renovations Snapshot





Highlights

- **8 schools have active construction projects** valued at \$27 million
- **McNicol Middle is nearing completion** within the next couple of months
- **SCEP is fully complete at 13 schools** and implementation is **underway at 15 schools**



Miramar Elementary

Contractors are installing roof drainage systems (emergency overflow) in all four buildings



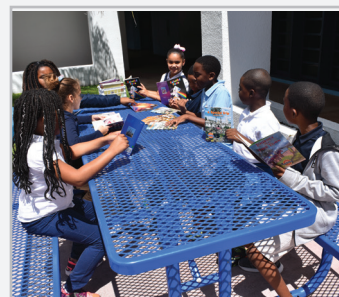
School Choice Enhancement Program (SCEP)



ATTUCKS MIDDLE
FRONT OFFICE FURNITURE



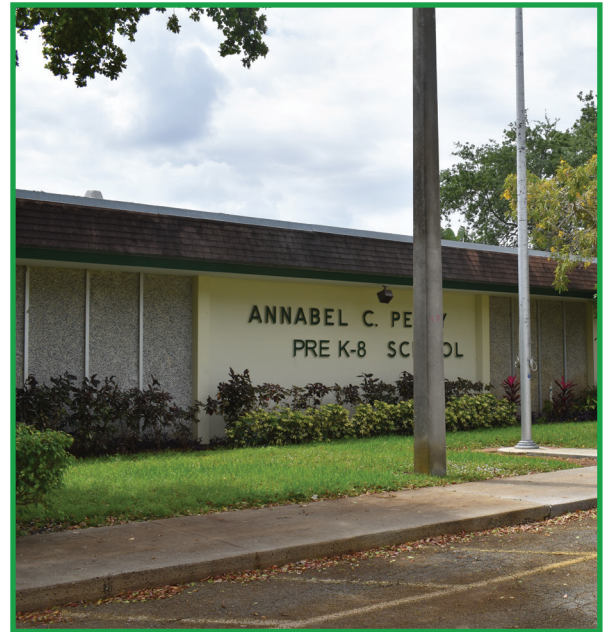
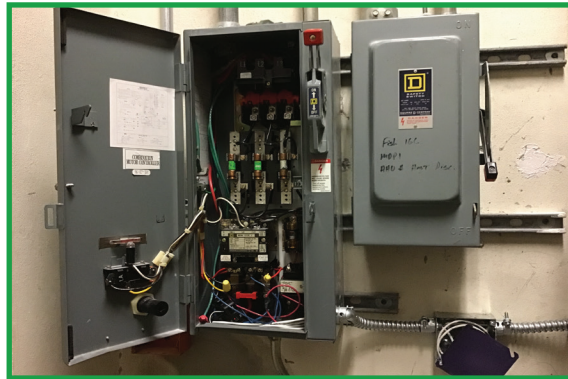
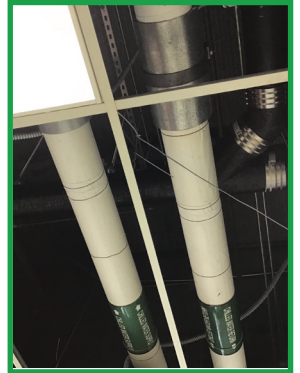
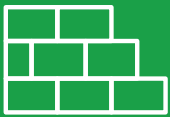
BEACHSIDE MONTESSORI VILLAGE
SCIENCE EQUIPMENT



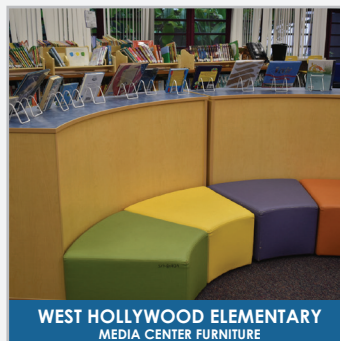
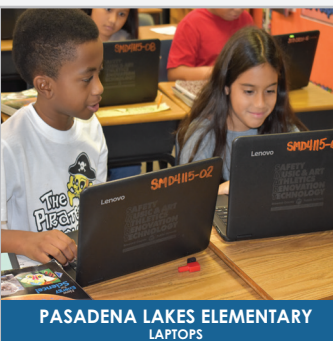
MIRAMAR ELEMENTARY
OUTDOOR BENCHES



ORANGE BROOK ELEMENTARY
MARQUEE

Annabel C. Perry Pre-K - 8
A new fire alarm system and fire sprinklers are being installed



PASADENA LAKES ELEMENTARY
LAPTOPS

SHERIDAN HILLS ELEMENTARY
CAFETERIA TABLES

WEST HOLLYWOOD ELEMENTARY
MEDIA CENTER FURNITURE

HOLLYWOOD HILLS HIGH
OFFICE FURNITURE

McNicol Middle

- Band classroom repainted and new floor, sink, & cabinets installed
- Air handling units and pumps were replaced in building 3
- Removed concrete stage and installed sound booths for music room
- Fire sprinklers installed under stairwells



DISTRICT 1

SMART PROGRAM AT A GLANCE



Primary Renovations can include:

- Roofing Improvements
- HVAC Improvements
- Electrical Improvements
- Exterior Improvements
- Music Room Renovations
- Media Center Improvements
- Window Replacements
- STEM Lab Improvements
- Art Lab Improvements
- Fire Alarms
- Fire Sprinklers



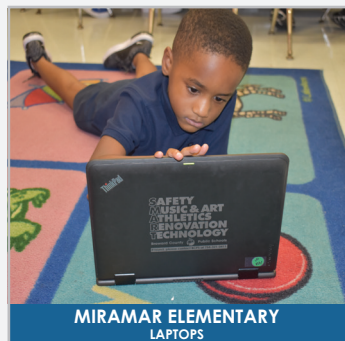
37 Schools*
underway or complete

13 Schools Complete

15 Schools in Implementation

9 Schools in Planning/Design

Items Purchased Include: office furniture, marquees, student laptops, two-way radios, P.E. equipment, and much more

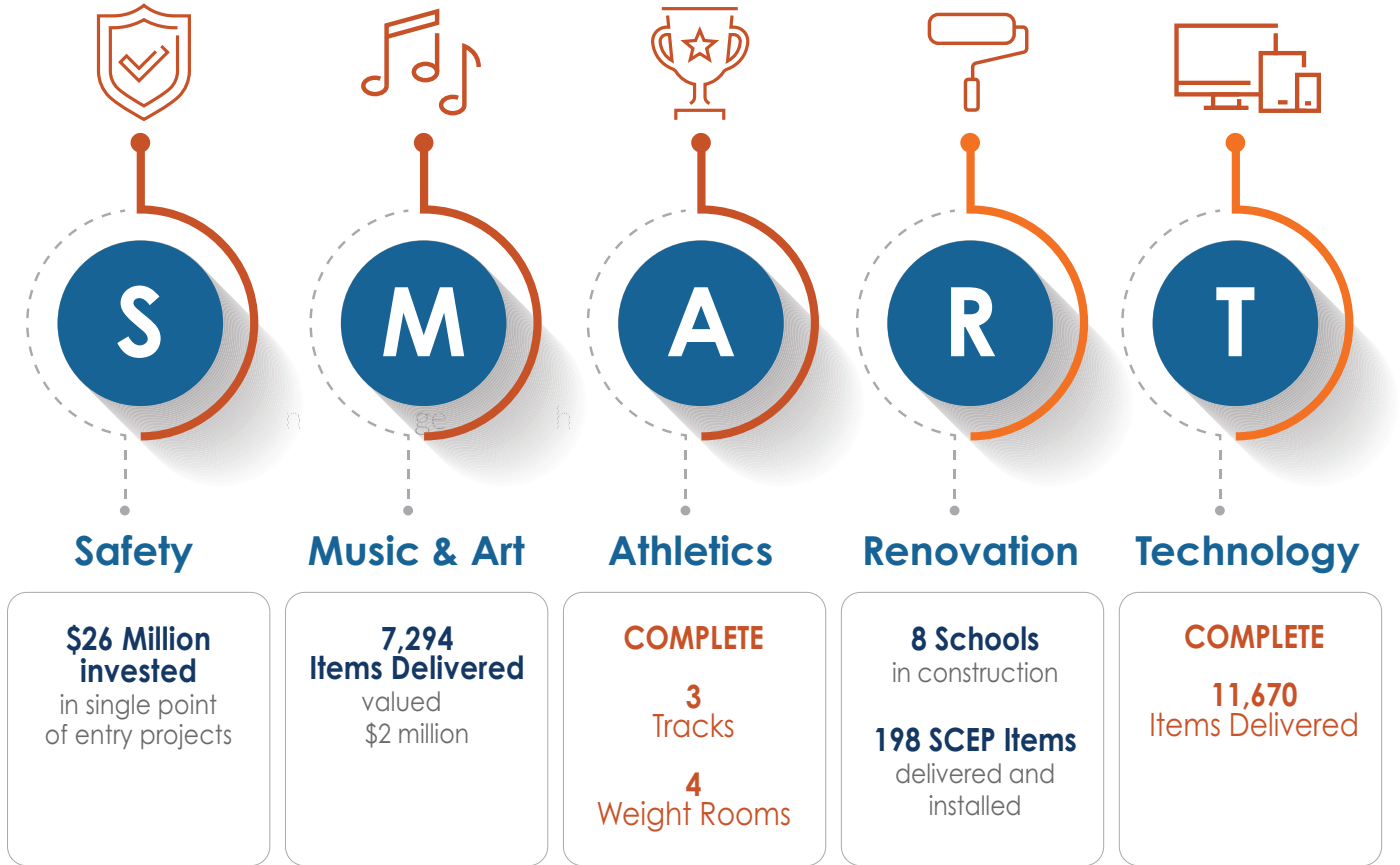


MIRAMAR ELEMENTARY
LAPTOPS

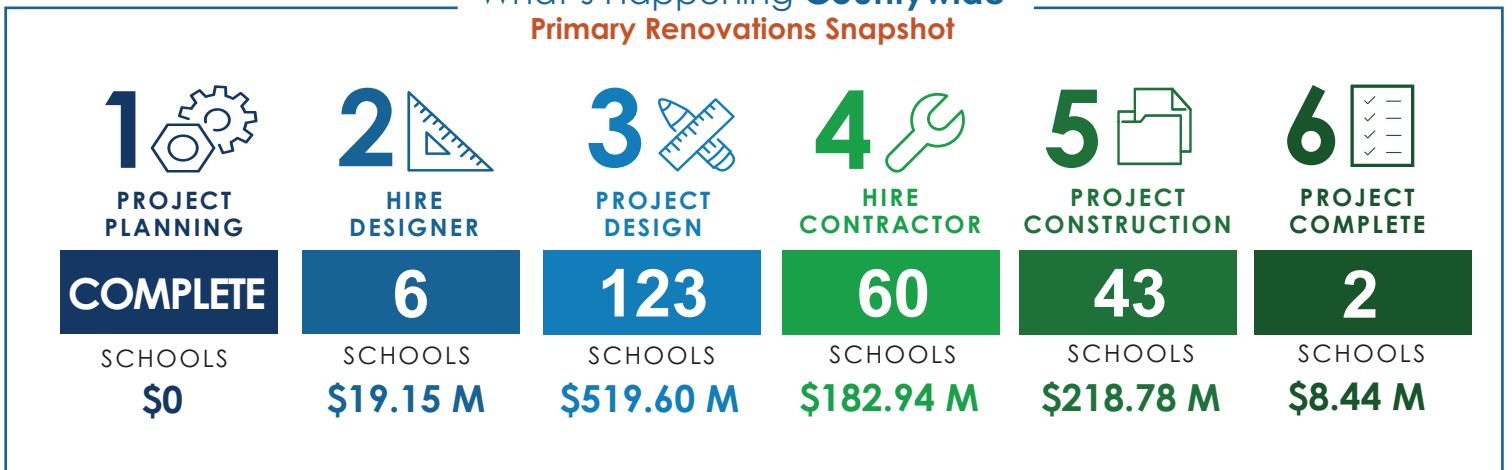
Data through April 30th, 2019

*Decrease in total number because of the merger of two schools

SMART by the Numbers | **District 1**



What's Happening **Countywide**
Primary Renovations Snapshot





38 FUNDED SCHOOLS IN DISTRICT 1

- **Annabel C. Perry Pre K-8 School**
- Apollo Middle School
- Attucks Middle School
- Beachside Montessori Village
- Boulevard Heights Elementary School
- **Colbert Museum Magnet**
- Collins Elementary School
- Dania Elementary School
- Driftwood Elementary School
- Driftwood Middle School
- Gulfstream Academy of Hallandale Beach K-8 (f.k.a Hallandale Adult & Community Center)
- Gulfstream Academy of Hallandale Beach K-8 (f.k.a Hallandale Elementary)
- Gulfstream Early Learning Center of Excellence
- Hallandale Magnet High School
- Henry D. Perry Education Center
- Hollywood Central Elementary School
- Hollywood Hills Elementary School
- Hollywood Hills High School
- Hollywood Park Elementary School
- **Lake Forest Elementary School**
- Lanier-James Education Center
- Mary M. Bethune Elementary School
- McArthur High School
- **McNicol Middle School**
- **Miramar Elementary School**
- **Oakridge Elementary School**
- Olsen Middle School
- Orange Brook Elementary School
- Pasadena Lakes Elementary School
- Pembroke Pines Elementary School
- Sheridan Hills Elementary School
- Sheridan Park Elementary School
- Sheridan Technical College
- South Broward High School
- Stirling Elementary School
- **The Quest Center**
- Watkins Elementary School
- **West Hollywood Elementary School**

STAY INFORMED

www.browardschools.com

VISIT

BrowardSchools.com/SMARTFutures

EMAIL

SMARTFutures@BrowardSchools.com

FOLLOW US ON TWITTER

@RobertwRuncie

@BCPS_SMART

@FrankGirardi15

*Bolded schools are in construction